



SOUTH AUSTRALIAN ECONOMIC INDICATORS

EMBARGO: 11:30AM (CANBERRA TIME) FRI 22 DEC 2000

C O N T E N T S

	<i>page</i>
Notes	2
REVIEW	
South Australian overview	3
Selected features	4
TABLES	
List of tables	5
Statistical summary	6
State summary	8
State accounts	9
International trade	10
Consumption and investment	14
Production	16
Consumer price index	20
Labour force and demography	21
Average weekly earnings	24
Financial markets	25
ADDITIONAL INFORMATION	
Publications source index	26

- For further information about these and related statistics, contact Rachel Smith on Adelaide 08 8237 7395, or the National Information Service on 1300 135 070.

NOTES

FORTHCOMING ISSUES

<i>ISSUE</i>	<i>RELEASE DATE</i>
February 2001	1 February 2001
March 2001	1 March 2001
April 2001	2 April 2001
May 2001	1 May 2001
June 2001	1 June 2001
July 2001	2 July 2001

ABOUT THIS PUBLICATION

South Australian Economic Indicators is a monthly publication which contains the latest available data at the time of preparation for a range of statistical series that have been identified as indicators of economic activity in this State. In a number of cases the figures presented are preliminary and subject to revision in subsequent issues.

DATA NOTE

ABS statistical series are being impacted to varying degrees as a result of The New Tax System, introduced in Australia from 1 July 2000. The New Tax System includes the removal of Wholesale Sales Tax and the introduction of a Goods and Service Tax (GST), and as a result, a number of ABS data series will reflect significant immediate and subsequent impacts. In future issues, implications of The New Tax System on series will be footnoted at the bottom of tables. For more information please see the Notes section in relevant publications.

Due to the suspension of trend series data for retail turnover, tables 1, 2 and now 9 show seasonally adjusted data. For more information see *Retail Trade, Australia, September* (Cat. no. 8501.0). Table 17 now shows the 14th Series CPI which commenced in the September quarter 2000. For more information see *Consumer Price Index, Australia* (Cat. no. 6401.0).

SYMBOLS AND OTHER USAGES

n.a.	not available
n.y.a.	not yet available
*	subject to sampling variability too high for most practical purposes
..	not applicable
0, 0.0	nil, or rounded to zero

ROUNDING

Where figures have been rounded, discrepancies may occur between sums of the component items and totals.

INFORMATION

All data are original, unless otherwise stated. More detailed information on each series, including explanatory and technical notes, can be obtained from other Australian Bureau of Statistics publications or alternative data sources. To assist those seeking further information, the series presented in the statistical and state summaries provides a reference to the Publication Source Index which is at the end of this publication.

I. Crettenden
Regional Director
South Australia

OVERVIEW

Data in the tables are generally expressed in original terms, while the data in this Overview are presented in trend terms, unless otherwise stated.

INTERNATIONAL TRADE

The value of merchandise exports in original terms for the month of October was \$552.6m. This is a decrease of 27.4% from the value for September and an increase of 1.0% over October 1999. The value of merchandise imports released from Customs control in original terms for South Australia was \$344.0m in October. This is a decrease of 19.4% from the value for September and an increase of 3.4% on October 1999.

CONSUMPTION AND INVESTMENT

The seasonally adjusted estimate of retail turnover fell (0.7%) in October 2000 to \$918.3m. The industry group which recorded the greatest increase was Other retailing (6.8%) while Department stores had the largest decrease (5.0%). Nationally the figure fell slightly by 0.2%.

New motor vehicle registrations rose 2.6% in October. Passenger vehicle registrations also rose (3.2%) while Other vehicle registrations fell slightly (0.5%). Compared to October 1999, new registrations have increased by 13.3%. In original terms there were 4,240 new motor vehicle registrations for the month.

Private new capital expenditure increased 4.5% in the June quarter to \$650.0m which was 18.4% higher than the June quarter 1999. In original terms private new capital expenditure for the quarter was \$696.0m.

HOUSING

The total number of dwellings approved fell by 7.0% in October 2000 to 429 dwellings. The total dwellings approved series is at its lowest level since it began in 1983 and is now 57.7% below the peak of January 2000. Private sector houses approved have declined for nine consecutive months with a fall of 3.9% in October 2000.

CONSUMER PRICE INDEX

The Consumer Price Index (all groups) in Adelaide increased by 3.7% to 132.3 in the September quarter of 2000, and by 5.8% over the level recorded twelve months previously. The main contributors to the recent quarterly growth were Clothing and footwear (up 9.2%), Communication (up 6.9%), and Alcohol and tobacco (up 6.0%).

LABOUR FORCE AND DEMOGRAPHY

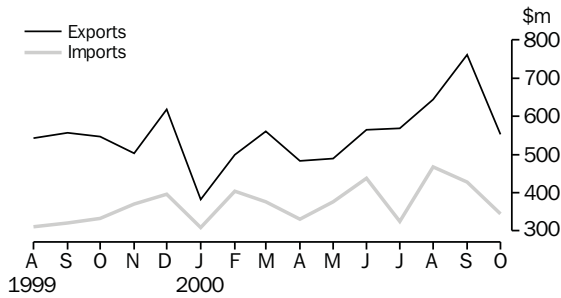
The trend estimate of employed persons in South Australia reached 679,600 in November 2000. This was 1.2% higher than the level of twelve months ago (671,800). The trend estimate of the unemployment rate for South Australia continues to decline, reaching 7.3% in November 2000. A year ago, the rate was higher at 8.1%.

FINANCIAL MARKETS

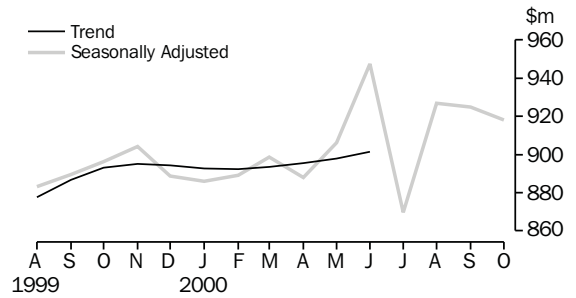
The value of secured housing finance commitments (excluding alterations and additions) has increased for the fifth consecutive month, reaching \$369.0m. This was a decrease of 1.6% on the level a year ago from the value in October 1999.

SELECTED FEATURES

MERCHANDISE EXPORTS AND IMPORTS

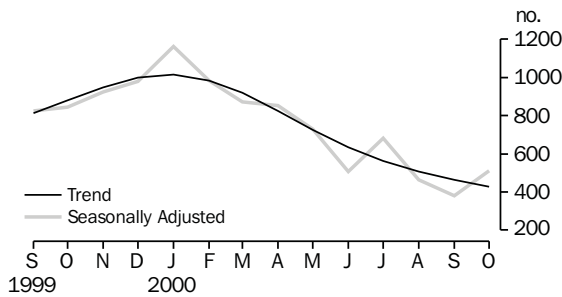


RETAIL TURNOVER(a)

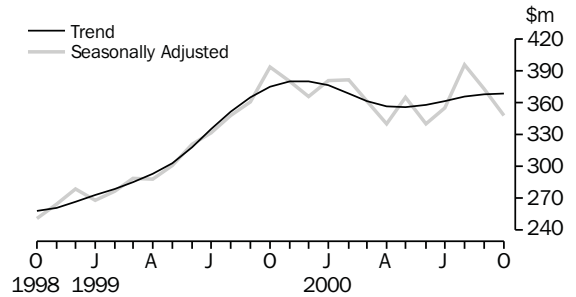


(a) Retail turnover trend series has been suspended. For more information see Data note on page 2.

DWELLING UNITS APPROVED

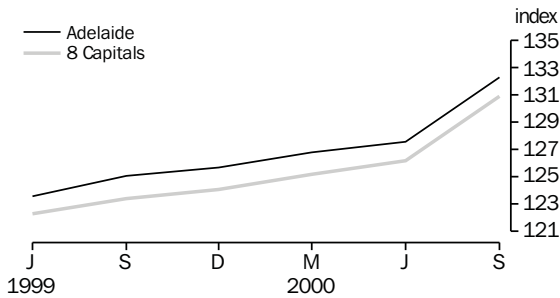


SECURED HOUSING FINANCE COMMITMENTS (a)

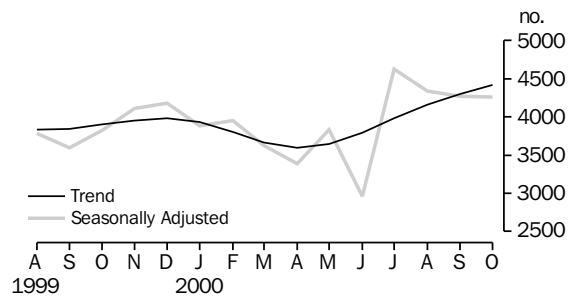


(a) Excludes alterations and additions. Includes refinancing.

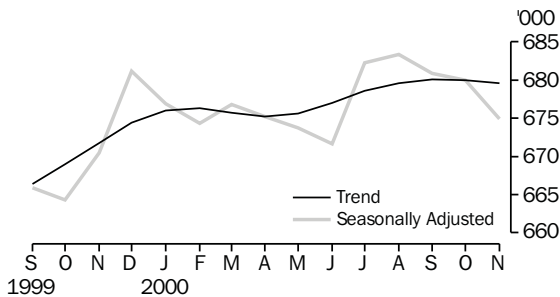
CONSUMER PRICE INDEX



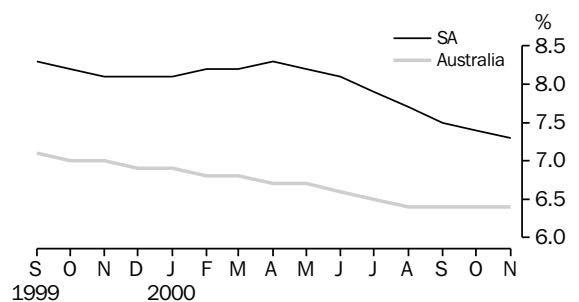
MOTOR VEHICLE REGISTRATIONS



EMPLOYED PERSONS



UNEMPLOYMENT RATE—TREND



LIST OF TABLES

			Page
STATISTICAL SUMMARY	1	Statistical summary	6
	2	State summary	8
STATE ACCOUNTS	3	State accounts at current prices	9
	4	State accounts at chain volume measures	9
INTERNATIONAL TRADE	5	Merchandise exports, by selected commodity group	10
	6	Merchandise exports, by selected countries and country groups	11
	7	Merchandise exports, by industry of origin	12
	8	Merchandise imports, by selected commodity group	13
CONSUMPTION AND INVESTMENT	9	Turnover of retail establishments, by industry—trend	14
	10	New motor vehicle registrations, by type of vehicle	14
	11	Actual private new capital expenditure, by selected industry and type of asset	15
	12	Tourist accommodation	15
PRODUCTION	13	Building approvals	16
	14	Building commencements	17
	15	Value of building work done and completed during period	18
	16	Production, livestock products and selected commodities	19
CONSUMER PRICE INDEX	17	Consumer price index, by group—Adelaide	20
LABOUR FORCE AND DEMOGRAPHY	18	Estimated resident population and components of population change	21
	19	Births, deaths, marriages and divorces	21
	20	Civilian labour force status	22
	21	Civilian labour force, unemployment and participation rates	23
AVERAGE WEEKLY EARNINGS	22	Average weekly earnings of employees	24
FINANCIAL MARKETS	23	Secured housing finance commitments	25
	24	Finance commitments	25

Indicator	Period	South Australia			Australia			SA as a % of Aust.	Source index
		Number	% change from		Number	% change from			
			Previous period	Same period previous year		Previous period	Same period previous year		
State accounts									
Domestic final demand									
Current prices trend (\$m)	Jun qtr 00	11 152	1.6	7.9	164 742	1.6	6.7	6.8	(1)
Chain volume measures trend (\$m)	Jun qtr 00	10 910	1.0	5.9	162 223	1.0	5.3	6.7	(1)
Private final consumption expenditure									
Current prices trend (\$m)	Jun qtr 00	6 751	1.1	5.7	95 007	1.2	5.2	7.1	(1)
Chain volume measures trend (\$m)	Jun qtr 00	6 643	0.7	4.4	93 580	0.8	3.9	7.1	(1)
Private gross fixed capital formation									
Current prices trend (\$m)	Jun qtr 00	1 853	2.3	15.0	31 990	2.1	7.8	5.8	(1)
Chain volume measures trend (\$m)	Jun qtr 00	1 810	2.9	11.8	31 906	1.8	7.4	5.7	(1)
Compensation of employees									
Current prices trend (\$m)	Jun qtr 00	5 073	1.3	3.7	10 246	0.8	3.2	49.5	(1)
International accounts									
Exports (\$m)	Oct 00	552.6	-27.4	1.0	10 143.9	9.8	39.6	5.4	(2)
Imports (\$m)	Oct 00	344.0	-19.4	3.4	10 951.2	10.9	7.2	3.1	(2)
Consumption and investment									
Retail turnover									
Current prices original (\$m)	Oct 00	931.6	3.5	1.5	12 734.0	1.7	2.6	7.3	(3)
Current prices seasonally adjusted (\$m)	Oct 00	918.3	-0.7	2.6	12 737.4	-0.2	4.2	7.2	(3)
Chain volume measures original(\$m)	Sep qtr 00	2 525.1	-2.2	-1.1	34 796.7	-1.7	-1.1	7.3	(3)
New motor vehicle registrations									
Original (no.)	Oct 00	4 240	2.5	15.9	65 050	1.7	14.4	6.5	(4)
Trend (no.)	Oct 00	4 417	2.6	13.3	70 628	1.3	14.8	6.3	(4)
Private new capital expenditure									
Current prices original (\$m)	Jun qtr 00	696	15.4	38.1	11 341	16.8	6.7	6.1	(5)
Current prices trend (\$m)	Jun qtr 00	650	4.5	18.4	10 495	0.7	-2.2	6.2	(5)
Private new capital expenditure (\$m)	1999-00	2 455	7.8	7.8	42 427	-5	-5.0	5.8	(5)
Takings, licensed hotels, motels, guest houses and apartments with facilities (\$m)	Jun qtr 00	49.3	-1.4	11.0	1 039.5	-4.5	9.8	4.7	(6)
Production									
Dwelling unit approvals									
Original (no.)	Oct 00	514	25.7	-35.3	9 377	4.8	-35.3	5.5	(7)
Trend (no.)	Oct 00	429	-7.0	-51.2	8 568	-3.6	-44.0	5.0	(7)
Dwelling units commenced (no.)	Jun qtr 00	2 448	-3.8	34.1	41 795	-4.8	13.3	5.9	(8a)
Value of non-residential building approvals (\$m)	Oct 00	45.3	54.1	43.4	1 028.5	3.1	18.5	4.4	(7)
Value of total building activity									
Commenced (\$m)	Jun qtr 00	462.5	-11.0	34.4	9 380.6	-0.2	22.6	4.9	(8)
Work done (\$m)	Jun qtr 00	519.2	19.3	50.0	11 187.2	20.1	26.7	4.6	(8)
Work yet to be done (\$m)	Jun qtr 00	495.1	-6.7	9.6	11 841.3	-9.3	-3.2	4.2	(8)
Value of engineering construction work done (\$m)	Jun qtr 00	347.5	-0.3	22.0	5 213.2	9.2	-2.0	6.7	(9)
Manufacturing production									
Red meat (tonnes)	Sep qtr 00	50 206	-7.5	20.4	784 646	1.5	65.3	6.4	(11)
Mineral exploration expenditure (other than for petroleum) (\$m)	Jun qtr 00	12.8	68.4	6.7	195.0	16.6	-25.7	6.6	(12)

Indicator	Period	South Australia			Australia			SA as a % of Aust.	Source index
		Number	% change from		Number	% change from			
			Previous period	Same period previous year		Previous period	Same period previous year		
Prices(a)									
CPI—All groups (index no.)	Sep qtr 00	132.3	3.7	5.8	130.9	3.7	6.1	..	(13)
Price index of materials used in house building (index no.)	Sep qtr 00	129.8	0.1	3.4	124.5	-0.8	3.3	..	(14)
Price index of materials used in building other than houses (index no.)	Sep qtr 00	116.0	-1.4	0.7	115.5	-1.6	0.3	..	(15)
Price index of established houses (index no.)	Sep qtr 00	127.6	0.6	6.2	147.1	-0.1	7.5	..	(16)
Price index of project homes (index no.)	Sep qtr 00	141.7	8.7	16.4	134.3	9.3	14.8	..	(16)
Labour force and demography									
Population (resident at end qtr) ('000)	Mar qtr 00	1 496.1	0.1	0.3	19 104.6	0.3	1.1	7.8	(17)
Short-term overseas visitor arrivals (no.)	Jul 00	10 230	12.0	19.7	429 030	23.3	10.4	2.4	(21)
Short-term resident departures (no.)	Jul 00	18 630	28.6	6.1	296 940	-2.2	3.6	6.3	(21)
Labour force									
Original ('000)	Nov 00	731.3	-0.2	0.4	9 668.5	-0.4	1.7	7.5	(18)
Trend ('000)	Nov 00	733.2	-0.2	0.6	9 718.6	-0.1	1.8	7.5	(18)
Employed persons									
Original ('000)	Nov 00	677.4	-0.6	0.7	9 067.5	-0.6	2.0	7.5	(18)
Trend ('000)	Nov 00	679.6	-0.1	1.2	9 098.6	-0.1	2.5	7.5	(18)
Participation rate									
Original(b) (%)	Nov 00	60.5	-0.2	-0.2	63.2	-0.4	0.2	..	(18)
Trend(b) (%)	Nov 00	60.7	-0.1	-0.2	63.6	-0.1	0.3	..	(18)
Unemployment rate									
Original(b) (%)	Nov 00	7.4	0.4	-0.3	6.2	0.2	-0.2	..	(18)
Trend(b) (%)	Nov 00	7.3	-0.1	-0.8	6.4	0.0	-0.6	..	(18)
Job vacancies ('000)	Aug 00	5.3	6.0	8.2	127.7	19.5	16.1	4.2	(19)
Industrial disputes ('000 working days lost)	Aug 00	0.1	0.0	-98.6	32.9	50.2	-74.7	0.3	(20)
Income									
Average weekly earnings (full-time adults; ordinary time)									
Original (\$)	Aug 00	745.50	2.6	6.2	798.10	2.0	6.2	..	(22)
Trend (\$)	Aug 00	743.50	1.7	5.9	796.60	1.5	5.5	..	(22)
Wage cost index (total hourly rate excluding bonuses)(c) (index no.)	Sep 00	109.1	0.9	3.0	109.7	1.2	3.1	..	(23)
Financial markets									
Secured housing finance(d) (\$m)	Oct 00	345.0	-0.6	-6.8	5 192.0	-0.2	-21.2	6.6	(24)
Finance commitments									
Personal (\$m)	Sep 00	231.3	-22.2	-13.3	3 582.9	-23.0	-16.5	6.5	(25)
Commercial (\$m)	Sep 00	503.6	22.5	6.6	14 830.5	-12.1	28.6	3.4	(25)
Lease (\$m)	Sep 00	15.8	56.4	-20.2	457.3	-2.8	-41.7	3.5	(25)
Interest rates(b)									
Banks new housing loans (%)	Oct 00	8.05	0.00	1.50	..	(26)
Bank loans—small, medium business(e) (%)	Oct 00	9.20	0.00	1.75	..	(26)
Bank loans—large business (%)	Oct 00	9.75	0.10	1.80	..	(26)

(a) Base year of each index 1989-90=100.

(b) Change is shown in terms of percentage points.

(c) Base year of index Sep 1997=100.

(d) Excludes alterations and additions. Includes refinancing.

(e) Rate for business loans over \$50,000.

2

STATE SUMMARY

<i>Indicator</i>	<i>Period</i>	<i>NSW</i>	<i>Vic.</i>	<i>Qld</i>	SA	<i>WA</i>	<i>Tas.</i>	<i>NT</i>	<i>ACT</i>	<i>Source index</i>
SELECTED INDICATORS										
CPI—All groups(a) (index no.)	Sep qtr 00	131.6	130.4	131.3	132.3	128.6	131.3	130.0	130.7	(13)
Participation rate trend (%)	Nov 00	62.2	63.8	64.6	60.7	66.5	59.5	69.6	73.8	(18)
Unemployment rate trend (%)	Nov 00	5.6	6.1	7.7	7.3	6.3	9.4	5.5	4.4	(18)
Average weekly earnings (full-time adults; ordinary time) trend (\$)	Aug 00	834.70	782.40	747.10	743.50	812.60	745.30	805.10	916.80	(22)

SELECTED INDICATORS PER HEAD OF POPULATION(b)

State final demand										
Chain volume measures trend (\$'000)	Jun qtr 00	8.7	8.5	8.2	7.3	8.3	6.9	10.3	15.9	(1)
Retail turnover										
Current prices original (\$)	Oct 00	690.5	625.1	685.8	622.7	677.1	584.1	712.7	833.9	(3)
Current prices seasonally adjusted (\$)	Oct 00	693.4	626.4	688.7	613.8	668.7	590.7	685.5	831.3	(3)
New motor vehicle registrations trend (no. per '000 population)	Oct 00	3.4	3.7	3.5	2.8	3.2	2.6	3.1	3.4	(4)
Private new capital expenditure										
Current prices trend (\$)	Jun qtr 00	598.8	565.6	528.3	434.6	660.7	266.0	643.3	340.6	(5)
Dwelling unit approvals										
Original (no. per '000 population)	Oct 00	0.399	0.517	0.560	0.273	0.643	0.253	0.319	0.421	(7)
Trend (no. per '000 population)	Oct 00	0.421	0.514	0.478	0.309	0.653	0.206	0.427	0.534	(7)
Secured housing finance(c) (\$)	Oct 00	315.3	253.1	228.8	230.6	319.0	168.0	205.7	260.4	(24)

PERCENTAGE CHANGE FROM PREVIOUS PERIOD

State final demand										
Chain volume measures trend (%)	Jun qtr 00	0.9	1.1	1.0	1.0	-0.1	1.5	-1.3	2.1	(1)
Retail turnover										
Current prices original (%)	Oct 00	-0.9	4.4	3.3	3.5	0.1	3.7	-1.0	4.8	(3)
Current prices seasonally adjusted (%)	Oct 00	-2.5	2.2	3.7	-0.7	-4.2	0.3	-1.6	2.0	(3)
New motor vehicle registrations trend (%)	Oct 00	5.7	1.3	2.5	2.5	-6.4	-19.7	1.9	-4.4	(4)
Private new capital expenditure										
Current prices trend (%)	Jun qtr 00	2.7	-1.6	-0.8	4.5	-0.8	10.6	-18.8	6.0	(5)
Dwelling unit approvals										
Original (%)	Oct 00	34.3	-14.6	-13.7	25.7	0.5	3.4	12.9	41.2	(7)
Trend (%)	Oct 00	2.3	-7.9	-6.6	-7.1	-3.1	-5.2	-10.8	7.8	(7)
CPI—All groups (%)	Sep qtr 00	3.6	3.8	3.9	3.7	3.7	3.8	3.4	3.8	(13)
Participation rate trend(d) (%)	Nov 00	-0.2	-0.1	-0.2	-0.1	0.1	0.0	0.4	0.2	(18)
Unemployment rate trend(d) (%)	Nov 00	0.1	-0.1	0.1	-0.1	0.1	0.0	0.1	-0.1	(18)
Average weekly earnings (full-time adults; ordinary time) trend (%)	Aug 00	1.2	1.7	2.2	1.7	1.4	1.4	1.1	0.8	(22)
Secured housing finance (%)	Oct 00	-4.1	3.2	4.0	-0.6	-0.2	11.3	11.1	-3.6	(24)

(a) Base year of index 1989-90 = 100.

(b) The latest quarterly estimate of Australian resident population has been used to calculate ratios for subsequent periods.

(c) Excludes alterations and additions. Includes refinancing.

(d) Change is shown in terms of percentage points.

3

STATE ACCOUNTS AT CURRENT PRICES

Period	Final consumption expenditure		Gross fixed capital formation		State final demand	Gross State product	Compensation of employees
	Households	General government	Private	Public			
ANNUAL (\$m)							
1997-98	24 390	7 907	6 705	1 310	40 312	39 290	18 905
1998-99	25 534	8 017	6 173	1 374	41 098	39 966	19 284
1999-00	26 503	8 360	(a)10 237	(a)-1 547	43 553	42 282	19 963
QUARTERLY, TREND (\$m)							
1998-99							
March	6 346	2 012	1 499	339	10 196	n.a.	4 823
June	6 388	2 010	1 575	359	10 333	n.a.	4 894
1999-00							
September	6 477	2 011	1 668	379	10 534	n.a.	4 932
December	6 585	2 054	1 750	380	10 765	n.a.	4 961
March	6 678	2 120	1 812	369	10 978	n.a.	5 009
June	6 751	2 172	1 853	358	11 152	n.a.	5 073

(a) The negative figure for Public gross fixed capital formation and the strong positive figure for Private gross fixed capital formation is the result of the sale of the South Australian electrical transmission network in December quarter 1999. For more information see *National Income, Expenditure and Product, Australian National Accounts, June 2000* (Cat. no. 5206.0).

Source: *Australian National Accounts: Quarterly State Details* (Cat. no. 5206.0.40.001), and *Australian National Accounts: State Accounts* (Cat. no. 5220.0).

4

STATE ACCOUNTS AT CHAIN VOLUME MEASURES(a)

Period	Final consumption expenditure		Gross fixed capital formation		State final demand	Gross State product
	Households	General government	Private	Public		
ANNUAL (\$m)						
1997-98	24 390	7 907	6 714	1 309	40 320	39 087
1998-99	25 200	7 841	6 066	1 386	40 493	39 966
1999-00	26 218	8 224	(b)10013	(b)-1456	42 999	41 381
QUARTERLY, TREND (\$m)						
1998-99						
March	6 341	2 000	1 506	341	10 188	n.a.
June	6 365	1 995	1 574	364	10 298	n.a.
1999-00						
September	6 434	1 999	1 641	387	10 461	n.a.
December	6 524	2 033	1 701	387	10 642	n.a.
March	6 596	2 075	1 759	371	10 801	n.a.
June	6 643	2 098	1 810	355	10 910	n.a.

(a) Reference year for chain volume measures is 1996-97.

(b) The negative figure for Public gross fixed capital formation and the strong positive figure for Private gross fixed capital formation is the result of the sale of the South Australian electrical transmission network in December quarter 1999. For more information see *National Income, Expenditure and Product, Australian National Accounts, June 2000* (Cat. no. 5206.0).

Source: *Australian National Accounts: Quarterly State Details* (Cat. no. 5206.0.40.001), and *Australian National Accounts: State Accounts* (Cat. no. 5220.0).

5

MERCHANDISE EXPORTS, BY SELECTED COMMODITY GROUP(a)

<i>Period</i>	<i>Meat and meat preparations</i>	<i>Wheat(b)</i>	<i>Wine</i>	<i>Wool and sheepskins (excl. wool tops)</i>	<i>Machinery</i>	<i>Metals and metal manufactures</i>	<i>Fish and crustaceans</i>	<i>Road vehicles, parts and accessories</i>	<i>Petroleum and petroleum products</i>	<i>Total</i>
	\$'000	\$'000	\$'000	\$'000	\$'000	\$'000	\$'000	\$'000	\$'000	\$'000
1997-98	218 252	446 839	564 093	287 824	401 749	574 407	236 353	479 396	237 824	4 986 705
1998-99	198 541	567 812	693 733	212 226	384 702	543 675	252 592	651 949	154 425	5 332 300
1999-00	160 483	473 086	899 348	179 716	353 205	805 744	394 375	883 792	218 466	6 188 231
1998-99										
May	16 087	37 891	69 509	20 656	34 714	57 271	20 328	28 067	19 003	461 901
June	13 274	44 468	77 522	13 202	29 477	50 927	17 824	90 638	14 832	478 816
1999-00										
July	11 764	27 968	60 499	10 288	29 602	53 204	30 310	41 016	16 088	441 950
August	7 777	34 802	81 661	12 680	27 056	61 903	81 050	97 193	2 428	543 384
September	10 284	52 367	100 662	15 114	37 219	57 003	57 030	59 781	17 842	556 471
October	12 408	50 939	96 166	16 327	29 940	69 728	28 318	65 627	28 792	546 911
November	13 487	7 829	54 034	16 631	31 130	70 076	26 161	141 478	3 439	502 798
December	12 091	73 023	50 412	13 568	26 925	71 545	21 104	179 287	19 102	618 005
January	11 676	42 774	46 507	9 949	20 727	49 340	24 759	24 514	17 151	381 964
February	15 413	42 027	61 522	14 350	26 925	77 412	19 371	44 842	26 572	499 394
March	16 203	37 670	81 909	15 355	31 158	75 803	21 515	80 430	26 155	560 304
April	15 688	48 190	81 644	13 701	26 242	69 225	28 678	21 432	27 316	484 156
May	16 988	31 684	93 800	20 262	33 529	69 203	27 111	64 861	3 473	488 743
June	16 704	23 814	90 533	21 491	32 751	81 301	28 968	63 329	30 107	564 152
2000-01										
July	17 198	19 207	91 473	18 494	31 670	66 891	37 243	113 052	28 523	569 057
August	12 891	34 504	91 522	13 844	32 251	54 268	117 598	119 950	12 106	643 738
September	21 180	66 366	110 849	16 682	28 998	96 608	66 255	137 884	49 737	760 714
October	22 695	30 992	102 803	25 859	28 719	92 966	17 291	66 725	12 221	552 645

(a) Restrictions are placed on the release of statistics for certain commodities for reasons of confidentiality. These restrictions do not affect total export and import figures, but they can affect some items within commodity, industry and country tables. See *International Trade* (Cat. no. 5422.0), Explanatory Notes, paragraph 30, for more details.

Source: Unpublished data, *International Merchandise Trade*.

6

MERCHANDISE EXPORTS, BY SELECTED COUNTRIES AND COUNTRY GROUPS

Period	European Union					South-East and North-East Asia				
	United States of America	Middle East	United Kingdom	Total European Union	New Zealand	Japan	China	Hong Kong	ASEAN	Total
	\$'000	\$'000	\$'000	\$'000	\$'000	\$'000	\$'000	\$'000	\$'000	\$'000
1997-98	632 203	389 766	424 251	849 932	354 698	612 475	331 489	239 652	491 573	2 023 385
1998-99	705 166	640 412	476 340	928 468	385 513	625 530	302 776	219 536	432 730	1 898 837
1999-00	954 681	724 871	625 154	1 073 928	446 026	787 295	315 199	255 679	492 304	2 297 913
1998-99										
May	50 172	41 235	44 124	95 851	31 605	73 576	29 447	16 125	35 990	189 921
June	98 299	38 031	49 708	80 488	47 036	54 060	22 775	13 782	47 319	159 292
1999-00										
July	54 593	31 570	39 127	80 383	39 266	72 253	16 859	15 394	27 998	162 944
August	87 288	50 910	58 622	101 012	46 379	104 035	18 156	13 326	36 480	202 395
September	57 055	41 511	73 174	112 056	44 181	94 402	31 426	22 587	43 853	214 621
October	46 383	80 029	78 330	117 681	49 572	62 459	32 529	25 385	40 020	203 079
November	102 334	82 481	33 828	67 501	40 223	36 313	31 053	22 591	46 641	169 668
December	147 939	130 984	36 575	76 383	37 356	40 148	14 457	27 195	40 711	171 092
January	40 261	53 129	30 102	63 379	22 005	37 506	20 084	29 260	25 167	142 744
February	55 875	71 510	42 617	73 030	44 832	48 221	41 265	20 241	38 646	206 501
March	131 298	24 442	53 267	87 039	37 877	65 469	43 237	26 342	41 680	215 769
April	68 381	66 629	58 962	99 714	19 524	63 008	21 328	20 398	39 863	187 566
May	101 180	30 245	64 293	101 411	23 024	53 701	19 306	14 037	49 465	173 766
June	62 092	61 433	56 258	94 338	41 788	109 779	25 500	18 924	61 779	247 770
2000-01										
July	100 237	65 100	55 658	85 089	34 848	85 633	24 427	23 112	51 101	216 245
August	129 063	59 559	66 643	101 217	32 645	157 472	22 980	12 572	45 178	262 071
September	96 218	108 684	86 998	136 724	38 887	142 299	22 894	24 661	66 896	291 859
October	56 512	61 366	83 954	127 426	41 418	39 706	42 431	18 385	59 245	196 446

Source: Unpublished data, International Merchandise Trade.

7

MERCHANDISE EXPORTS, BY INDUSTRY OF ORIGIN(a)

Period	Manufacturing								Total
	Agriculture, forestry and fishing(b)	Mining	Food, beverages and tobacco	Petroleum, coal, chemical associated product	Metal product	Machinery and equipment	Other manu- facturing	Other industries/ confidential	
	\$'000	\$'000	\$'000	\$'000	\$'000	\$'000	\$'000	\$'000	\$'000
1997-98	1 188 938	137 851	1 205 265	292 175	615 344	994 597	262 815	289 719	4 986 705
1998-99	1 352 378	73 125	1 282 013	285 053	581 372	1 172 362	264 973	321 024	5 332 300
1999-00	934 944	135 461	1 517 721	369 480	837 235	1 412 721	256 771	723 899	6 188 231
1998-99									
May	110 159	8 781	122 596	30 879	61 320	72 831	24 787	30 548	461 901
June	89 505	3 320	122 939	26 617	54 826	132 292	19 834	29 484	478 816
1999-00									
July	82 083	7 380	120 642	26 813	54 441	84 369	19 700	46 522	441 950
August	86 698	9 096	118 366	14 845	63 726	139 131	23 206	88 315	543 384
September	74 415	1 155	168 993	30 754	60 553	115 282	20 174	85 146	556 471
October	85 540	19 297	143 971	40 142	71 232	110 813	24 368	51 548	546 911
November	41 532	7 772	97 497	16 152	72 647	185 987	22 701	58 511	502 798
December	102 230	23 130	86 989	34 314	75 511	220 588	20 718	54 524	618 005
January	81 352	1 897	92 547	26 226	50 560	54 575	17 884	56 923	381 964
February	69 558	20 910	110 729	39 201	81 114	87 688	21 193	69 001	499 394
March	91 256	1 157	136 228	40 091	78 579	127 314	23 185	62 493	560 304
April	77 966	20 118	140 525	40 372	71 716	62 360	19 912	51 186	484 156
May	73 998	1 208	148 640	16 480	72 947	113 986	20 553	40 930	488 743
June	68 317	22 340	152 594	44 089	84 209	110 627	23 176	58 799	564 152
2000-01									—
July	65 147	6 159	162 950	42 580	71 223	160 091	22 674	38 234	569 057
August	70 401	3 238	181 068	25 595	59 116	169 901	21 095	113 325	643 738
September	93 761	28 341	216 345	64 788	98 047	183 523	19 972	55 936	760 714
October	72 831	9 037	153 052	23 867	95 730	113 945	23 395	60 789	552 645

(a) Restrictions are placed on the release of statistics for certain commodities for reasons of confidentiality. These restrictions do not affect total export and import figures, but they can affect some items within commodity, industry and country tables. See *International Trade* (Cat. no. 5422.0), Explanatory Notes, paragraph 30, for more details.

(b) Bulk barley details are only included in this item for periods prior to September 1999. Due to confidentiality restrictions bulk barley is included in 'Other industries/confidential' from September 1999 onwards.

Source: Unpublished data, *International Merchandise Trade*.

8

MERCHANDISE IMPORTS, BY SELECTED COMMODITY GROUP(a)

<i>Period</i>	<i>Food, beverages and tobacco</i>	<i>Petroleum and petroleum products</i>	<i>Chemicals</i>	<i>Textiles</i>	<i>Metals and metal manufactures</i>	<i>Machinery</i>	<i>Road vehicle parts and accessories</i>	<i>Other manufactured goods</i>	<i>Total</i>
	\$'000	\$'000	\$'000	\$'000	\$'000	\$'000	\$'000	\$'000	\$'000
1997-98	148 771	445 218	274 741	93 815	280 562	1 061 260	772 203	739 266	3 940 198
1998-99	162 784	271 492	281 097	96 052	264 732	917 879	812 096	765 643	3 716 152
1999-00	163 509	515 641	263 959	97 001	262 756	1 164 722	834 845	845 930	4 319 339
1998-99									
May	9 387	27 892	24 936	8 295	18 148	75 202	49 320	55 967	283 113
June	12 748	22 304	15 461	7 490	19 168	72 618	67 354	71 583	301 272
1999-00									
July	14 835	58 324	16 552	8 454	19 097	82 015	78 647	64 793	355 421
August	12 100	27 827	14 014	8 245	19 964	80 979	72 125	65 350	311 678
September	15 546	92	17 923	8 064	20 812	104 051	68 466	73 988	320 308
October	16 262	42 269	14 472	7 989	19 249	81 573	71 316	69 205	332 726
November	19 706	81 584	18 593	7 803	20 635	75 748	59 410	73 473	369 548
December	15 031	73 789	25 809	6 376	22 494	120 636	49 107	69 831	395 215
January	11 042	40 216	27 862	6 948	20 703	71 575	56 419	61 667	309 362
February	13 633	36 561	17 170	7 363	22 138	149 008	62 560	74 495	403 840
March	10 534	23 846	36 835	8 774	24 635	100 622	77 585	73 811	376 965
April	8 677	49 022	23 130	9 829	23 748	78 906	63 183	59 870	330 807
May	12 970	150	26 399	8 749	25 235	103 105	93 658	89 402	376 366
June	13 173	81 962	25 199	8 406	24 045	116 504	82 369	70 045	437 101
2000-01									
July	12 672	12 429	15 595	7 477	27 313	81 145	88 021	64 453	323 824
August	15 478	105 525	18 815	10 427	31 299	84 426	85 147	100 493	466 394
September	14 682	112 111	16 617	7 998	26 078	92 740	69 757	74 851	426 889
October	19 563	20	16 318	9 911	29 345	100 101	78 053	76 302	343 977

(a) Restrictions are placed on the release of statistics for certain commodities for reasons of confidentiality. These restrictions do not affect total export and import figures, but they can affect some items within commodity, industry and country tables. See *International Trade* (Cat. no. 5422.0), Explanatory Notes, paragraph 30, for more details.

Source: Unpublished data, *International Merchandise Trade*.

9

TURNOVER OF RETAIL ESTABLISHMENTS, BY INDUSTRY—SEASONALLY ADJUSTED(a)

Period	Food retailing	Department stores	Clothing and soft good retailing	Household good retailing	Recreational good retailing	Other retailing	Hospitality and services	Total
	\$m	\$m	\$m	\$m	\$m	\$m	\$m	\$m
1999-00								
August	382.7	93.9	53.9	89.6	30.1	90.2	142.3	882.7
September	379.8	92.7	53.3	92.2	33.0	89.1	149.2	889.2
October	377.7	93.4	52.9	92.4	29.4	89.6	159.4	894.7
November	382.1	94.6	52.9	94.1	32.3	93.6	154.7	904.2
December	377.4	90.6	53.7	88.1	33.6	94.0	149.9	887.2
January	369.1	92.2	48.2	92.5	28.0	91.2	165.1	886.3
February	375.9	90.7	48.8	90.7	29.3	93.1	160.2	888.7
March	382.6	92.8	46.7	97.0	30.3	94.2	157.3	900.9
April	393.0	93.4	46.4	92.7	27.0	90.3	147.0	889.8
May	397.3	94.6	50.3	98.7	26.0	91.8	148.3	907.0
June	392.1	111.1	56.8	115.8	26.2	94.2	151.6	947.9
2000-01								
July	378.9	75.3	41.7	91.9	26.4	95.7	159.7	869.7
August	388.2	94.0	46.1	99.4	26.2	102.5	169.9	926.3
September	383.7	94.7	50.6	97.9	25.3	106.3	166.5	925.0
October	381.2	90.0	47.6	94.0	23.8	113.6	168.1	918.3

(a) The retail trend series in current price terms has been replaced by seasonally adjusted data. For more information see *Retail Trade, Australia, October 2000* (Cat. no. 8501.0).

Source: *Retail Trade, Australia* (Cat. no. 8501.0).

10

NEW MOTOR VEHICLE REGISTRATIONS, BY TYPE OF VEHICLE(a)

Period	Original			Seasonally adjusted			Trend estimate		
	Passenger vehicles	Other vehicles	Total	Passenger vehicles	Other vehicles	Total	Passenger vehicles	Other vehicles	Total
1999-00									
August	3 149	702	3 851	3 047	741	3 788	3 148	689	3 837
September	3 120	531	3 651	3 039	559	3 598	3 149	695	3 844
October	2 983	676	3 659	3 027	797	3 824	3 210	690	3 900
November	3 656	679	4 335	3 423	684	4 107	3 276	676	3 952
December	3 729	694	4 423	3 553	627	4 180	3 327	655	3 982
January	2 462	464	2 926	3 265	617	3 882	3 296	635	3 931
February	3 269	599	3 868	3 315	635	3 950	3 184	622	3 806
March	3 289	705	3 994	3 007	622	3 629	3 055	614	3 669
April	2 400	500	2 900	2 825	564	3 389	2 987	612	3 599
May	3 171	725	3 896	3 210	625	3 835	3 030	616	3 646
June	2 720	943	3 663	2 261	698	2 959	3 167	617	3 793
2000-01									
July	4 078	538	4 616	4 072	559	4 631	3 363	616	3 979
August	3 956	582	4 538	3 753	584	4 337	3 543	613	4 156
September	3 547	591	4 138	3 595	675	4 270	3 695	608	4 303
October	3 747	493	4 240	3 700	563	4 263	3 812	605	4 417

(a) Trend estimates for March 2000 to August 2000 have been revised. For more information see *New Motor Vehicle Registrations, Australia, Preliminary* (Cat. no. 9301.0).

Source: *New Motor Vehicle Registrations, Australia, Preliminary* (Cat. no. 9301.0) and unpublished data.

11

ACTUAL PRIVATE NEW CAPITAL EXPENDITURE, BY SELECTED INDUSTRY AND TYPE OF ASSET

Period	Industry			Total	Type of asset	
	Mining	Manufacturing	Other selected industries		New buildings and structures	Equipment, plant and machinery
ANNUAL (\$m)						
1997-98	1 366	820	1 006	3 192	792	2 400
1998-99	508	776	992	2 277	529	1 748
1999-00	242	854	1 358	2 455	619	1 836
QUARTERLY, ORIGINAL (\$m)						
1998-99						
March	98	187	220	505	97	407
June	136	188	180	504	103	401
1999-00						
September	71	163	391	625	125	500
December	50	232	249	530	117	413
March	55	208	341	603	157	446
June	67	252	378	696	220	476
QUARTERLY, TREND (\$m)						
1998-99						
March	n.a.	n.a.	n.a.	553	117	436
June	n.a.	n.a.	n.a.	549	107	442
1999-00						
September	n.a.	n.a.	n.a.	558	109	449
December	n.a.	n.a.	n.a.	585	134	451
March	n.a.	n.a.	n.a.	622	167	455
June	n.a.	n.a.	n.a.	650	196	454

Source: State Estimates of Private New Capital Expenditure (Cat. no. 5646.0).

12

TOURIST ACCOMMODATION

Period	Hotels with facilities				Motels and guesthouses				Serviced apartments			
	Estab-lish-ments	Guest rooms	Room occu-pancy	Takings	Estab-lish-ments	Guest rooms	Room occu-pancy	Takings	Estab-lish-ments	Guest rooms	Room occu-pancy	Takings
	no.	no.	%	\$'000	no.	no.	%	\$'000	no.	no.	%	\$'000
1997-98												
June	61	4 048	53.6	19 048	147	5 136	52.8	17 773	19	750	59.4	3 551
1998-99												
September	61	4 048	57.2	21 068	146	5 112	51.7	17 805	19	740	56.3	3 667
December	61	4 053	63.0	24 954	146	5 135	58.1	19 990	22	888	66.0	4 884
March	61	4 053	59.6	22 181	145	5 119	55.3	18 793	22	888	65.8	4 516
June	62	4 095	58.6	22 362	146	5 189	51.5	18 140	22	889	54.1	3 947
1999-00												
September	62	3 988	58.0	20 959	146	5 175	50.7	17 812	23	1 084	60.2	5 265
December	62	4 090	61.6	24 619	146	5 166	55.1	19 928	26	1 207	61.5	6 462
March	62	4 065	60.1	23 738	146	5 168	55.3	19 956	26	1 213	62.6	6 739
June	60	4 037	58.7	23 033	147	5 212	53.1	19 309	26	1 208	62.7	6 912

Source: Tourist Accommodation, Australia (Cat. no. 8635.0).

Period	Houses		Total dwelling units		New residential building \$m	Alterations and additions to residential building \$m	Total residential building \$m	Non-residential building \$m	Total building \$m
	Private sector	Total	Private sector	Total					
	no.	no.	no.	no.					
ANNUAL									
1997-98	6187	6380	6997	7215	630.2	127.7	758.0	602.2	1360.1
1998-99	6568	6777	7697	7928	775.6	144.0	919.6	670.9	1590.5
1999-00	8290	8392	9915	10024	1022.9	188.9	1211.8	585.7	1797.5
MONTHLY, ORIGINAL									
1999-00									
August	663	669	765	771	76.4	15.5	91.9	37.5	129.4
September	731	772	866	907	88.5	15.9	104.3	49.2	153.5
October	667	681	777	794	79.6	14.0	93.7	31.6	125.2
November	892	904	981	993	101.4	15.5	116.9	36.2	153.1
December	736	736	842	842	85.8	13.4	99.2	129.5	228.8
January	649	649	783	783	69.7	25.4	95.1	18.5	113.6
February	836	838	1071	1073	111.8	18.7	130.5	43.3	173.9
March	807	809	972	974	99.7	15.8	115.5	59.0	174.5
April	561	565	635	643	64.9	11.8	76.7	58.7	135.3
May	616	625	795	804	79.5	17.3	96.8	66.1	162.9
June	517	524	591	598	63.9	11.5	75.4	24.3	99.7
2000-01									
July	443	461	689	710	83.5	9.3	92.8	60.6	153.4
August	450	465	507	522	57.8	11.9	69.7	89.6	159.3
September	353	353	409	409	42.1	12.6	54.7	29.4	84.1
October	434	434	510	514	55.6	13.1	68.7	45.3	114.0
MONTHLY, TREND									
1999-00									
August	630	648	741	761	77.6	13.6	91.2	37.0	128.3
September	683	700	795	813	81.8	14.1	95.9	37.7	133.6
October	746	761	863	879	86.8	15.4	102.1	37.6	139.7
November	804	815	935	946	92.0	17.1	109.1	37.0	146.1
December	842	849	991	998	96.6	18.8	115.5	37.9	153.3
January	846	849	1011	1014	98.8	19.9	118.6	40.2	158.8
February	812	813	983	985	97.4	19.8	117.2	42.9	160.1
March	747	749	916	919	92.7	18.4	111.1	46.4	157.6
April	659	664	820	826	85.4	16.1	101.5	50.0	151.5
May	569	577	715	724	76.5	13.7	90.3	52.3	142.6
June	495	505	623	634	68.0	12.2	80.2	52.9	133.1
2000-01									
July	443	453	553	564	60.8	11.6	72.4	52.4	124.9
August	406	415	497	507	55.2	11.3	66.5	52.0	118.5
September	381	388	454	462	50.8	11.1	61.9	51.8	113.7
October	366	371	422	429	47.6	11.1	58.7	50.9	109.6

Source: *Building Approvals, Australia* (Cat. no. 8731.0); Unpublished data, *Building Approvals*.

14

BUILDING COMMENCEMENTS

Period	New houses		Total dwelling units(a)		New residential building \$m	Alterations and additions to residential building \$m	Non-residential building		
	Private sector	Total	Private sector	Total			Private sector	Total	Total building
	no.	no.	no.	no.			\$m	\$m	\$m
1997-98	5 628	5 823	6 437	6 653	614.7	134.5	426.4	550.7	1 299.9
1998-99	6 091	6 296	7 186	7 416	771.3	139.7	400.7	624.3	1 535.3
1999-00	7 703	7 830	9 341	9 485	1 041.1	202.8	344.8	569.9	1 813.7
1997-98									
June	1 334	1 397	1 490	1 558	152.9	30.4	134.5	169.1	352.4
1998-99									
September	1 563	1 610	1 927	1 980	184.7	35.0	89.5	131.1	350.7
December	1 644	1 699	1 891	1 965	231.1	34.3	94.6	134.8	400.2
March	1 293	1 326	1 612	1 645	171.6	32.7	145.6	235.5	439.8
June	1 591	1 661	1 756	1 826	183.9	37.8	71.0	122.9	344.6
1999-00									
September	1 752	1 792	2 116	2 166	251.2	42.6	84.1	109.3	403.1
December	1 947	2 007	2 264	2 327	250.9	45.2	92.7	132.2	428.3
March	2 054	2 064	2 534	2 544	284.9	52.1	70.8	182.9	519.9
June	1 950	1 967	2 427	2 448	254.1	62.9	97.3	145.5	462.5

(a) Includes conversions.

Source: Building Activity, Australia (Cat. no. 8752.0).

VALUE OF BUILDING WORK DONE AND COMPLETED DURING PERIOD

Period	New houses		New residential building			Non-residential building		Total building		
	Private sector	Total	Private sector	Total	Alterations and additions to residential building	Total residential building	Private sector	Total	Private sector	Total
	\$m	\$m	\$m	\$m	\$m	\$m	\$m	\$m	\$m	\$m
VALUE OF BUILDING WORK DONE										
1997-98	522.9	535.7	590.4	605.4	131.6	737.0	538.9	685.0	1 259.3	1 422.0
1998-99	599.4	614.6	720.8	737.7	147.7	885.4	417.1	571.6	1 283.8	1 457.0
1999-00	795.8	809.9	980.9	996.4	195.9	1 192.3	404.8	621.5	1 576.9	1 813.8
1997-98										
June	135.9	139.4	154.5	158.5	31.2	189.7	112.3	151.5	297.9	341.1
1998-99										
September	150.9	155.8	175.8	180.9	39.8	220.7	135.5	162.9	350.5	383.6
December	151.4	155.1	185.6	189.9	40.3	230.1	121.5	160.4	347.0	390.6
March	142.4	144.9	169.5	172.5	33.2	205.7	87.5	131.1	290.1	336.8
June	154.7	158.9	189.9	194.4	34.4	228.9	72.6	117.2	296.2	346.1
1999-00										
September	166.8	171.9	212.6	218.4	41.3	259.8	116.7	171.5	369.4	431.3
December	187.5	192.0	227.3	232.1	46.8	278.9	101.0	149.2	374.3	428.1
March	193.0	196.1	239.4	242.6	47.2	289.9	86.3	145.3	372.4	435.2
June	248.5	249.9	301.6	303.3	60.5	363.8	100.8	155.4	460.9	519.2
VALUE OF BUILDING WORK COMPLETED										
1997-98	504.1	514.7	561.8	574.7	125.0	699.7	571.2	744.0	1 256.3	1 443.7
1998-99	600.6	614.8	700.0	715.2	153.2	868.4	505.3	639.4	1 356.8	1 507.8
1999-00	709.3	726.0	863.0	881.6	191.4	1 073.1	360.4	533.4	1 411.8	1 606.5
1997-98										
June	125.3	128.1	136.0	139.8	24.6	164.4	110.1	148.0	270.6	312.5
1998-99										
September	148.1	152.4	161.1	165.8	36.1	201.9	68.2	106.7	264.9	308.6
December	168.4	174.1	190.2	196.1	49.3	245.4	174.9	203.3	414.1	448.7
March	145.1	147.6	180.1	183.0	36.7	219.7	161.3	207.4	377.8	427.1
June	139.0	140.7	168.6	170.3	31.0	201.4	101.0	122.0	300.0	323.3
1999-00										
September	148.9	154.7	170.2	177.7	38.5	216.2	67.9	104.1	275.4	320.2
December	190.6	195.1	221.7	226.5	45.5	272.0	124.7	161.8	391.3	433.8
March	156.0	160.2	177.8	182.0	42.2	224.2	100.8	150.4	320.0	374.6
June	213.7	215.9	293.3	295.5	65.2	360.8	67.0	117.1	425.2	477.9

Source: Building Activity, Australia (Cat. no. 8752.0).

<i>Period</i>	<i>Pigmeat</i>	<i>Beef</i>	<i>Mutton</i>	<i>Lamb</i>	<i>Gas</i>	<i>Coal(a)</i>	<i>Sawn timber(b)</i>
	<i>tonnes</i>	<i>tonnes</i>	<i>tonnes</i>	<i>tonnes</i>	<i>m MJ</i>	<i>tonnes</i>	<i>m³</i>
1997-98	28 489	80 924	58 554	38 224	78 441	2 815 870	361 257
1998-99	30 864	62 266	48 029	44 173	86 228	2 686 069	374 590
1999-00	31 927	78 001	28 970	56 668	87 442	2 920 944	425 549
1998-99							
September	6 782	15 160	10 348	10 738	23 573	748 575	95 339
December	7 269	17 609	15 737	10 997	19 718	671 040	94 578
March	8 031	14 780	14 029	10 101	19 343	826 095	88 282
June	8 782	14 717	7 915	12 337	23 594	440 359	96 391
1999-00							
September	7 294	17 107	5 654	11 492	22 162	783 227	111 075
December	7 504	18 401	8 714	11 944	20 992	684 296	93 802
March	8 245	21 743	8 810	14 475	21 790	747 472	112 949
June	8 884	20 750	5 792	18 757	22 498	705 949	107 723
2000-01							
September	8 227	18 011	8 072	15 785	24 437	n.y.a.	126 440

(a) Data supplied by Flinders Power Pty Ltd.

(b) From Australian softwood logs only.

Source: *Livestock Products, Australia* (Cat. no. 7215.0); *Unpublished data, Manufacturing Production*.

<i>Period</i>	<i>Food</i>	<i>Alcohol and tobacco</i>	<i>Clothing and footwear(a)</i>	<i>Housing (b)</i>	<i>House furnishings, supplies and services(c)</i>	<i>Health (c)</i>	<i>Transportation(b)</i>	<i>Communication(a)</i>	<i>Recreation(c)</i>	<i>Education(b)</i>	<i>Miscellaneous(c)</i>	<i>All groups</i>
ANNUAL AVERAGE (1989–90 = 100.0)												
1997–98	n.a.	n.a.	n.a.	n.a.	n.a.	n.a.	n.a.	n.a.	n.a.	n.a.	n.a.	121.6
1998–99	127.7	171.8	105.0	92.0	113.3	176.0	121.6	101.9	117.9	204.8	142.7	123.2
1999–00	130.8	179.1	103.3	97.0	112.9	165.7	129.4	97.7	119.1	215.8	148.8	126.3
QUARTERLY (1989–90 = 100.0)												
1998–99												
June	128.8	173.3	105.7	92.8	113.2	164.5	122.4	100.0	118.9	210.8	142.6	123.6
1999–00												
September	129.7	174.4	104.8	95.0	112.5	164.5	127.8	97.7	119.7	210.8	143.2	125.1
December	130.4	177.8	102.5	96.9	112.7	163.7	127.4	97.2	119.7	210.8	147.4	125.7
March	131.2	181.6	101.9	97.9	112.9	166.7	130.4	97.0	118.5	220.7	150.6	126.8
June	131.9	182.5	104.0	98.3	113.4	167.9	131.9	98.7	118.6	220.7	153.9	127.6
2000–01												
September	133.8	193.4	113.6	103.9	116.0	168.5	136.8	105.5	122.7	220.9	157.8	132.3
PERCENTAGE CHANGE FROM SAME QUARTER OF PREVIOUS YEAR												
1998–99												
June	n.a.	n.a.	n.a.	n.a.	n.a.	n.a.	n.a.	n.a.	n.a.	n.a.	n.a.	n.a.
1999–00												
September	3.0	2.2	-0.5	4.2	-1.1	-12.6	4.6	-6.1	2.6	6.0	1.0	1.7
December	1.7	3.7	-2.8	5.4	-1.1	-12.6	5.0	-5.9	2.0	6.0	2.8	1.7
March	2.5	5.7	-1.7	6.2	0.5	1.7	7.9	-3.2	-0.1	4.7	5.2	3.3
June	2.4	5.3	-1.6	5.9	0.2	2.1	7.8	-1.3	-0.3	4.7	7.9	3.2
2000–01												
September	3.2	10.9	8.4	9.4	3.1	2.4	7.4	8.0	2.5	4.8	10.2	5.8
PERCENTAGE CHANGE FROM PREVIOUS QUARTER												
1998–99												
June	n.a.	n.a.	n.a.	n.a.	n.a.	n.a.	n.a.	n.a.	n.a.	n.a.	n.a.	n.a.
1999–00												
September	0.7	0.6	-0.9	2.4	-0.6	0.0	4.1	-2.3	0.7	0.0	0.4	1.2
December	0.5	1.9	-2.2	2.0	0.2	-0.5	-0.3	-0.5	0.0	0.0	2.9	0.5
March	0.6	2.1	-0.6	1.0	0.2	1.8	2.4	-0.2	-1.0	4.7	2.2	0.9
June	0.5	0.5	2.1	0.4	0.4	0.7	1.2	1.8	0.1	0.0	2.2	0.6
2000–01												
September	1.4	6.0	9.2	5.7	2.3	0.4	3.7	6.9	3.5	0.1	2.5	3.7

(a) The 14th series CPI commenced September quarter 2000. For more information see *Consumer Price Index, Australia, September Quarter 2000* (Cat. no. 6401.0).

(b) Series renamed only (linked to the 13th series equivalent). See Appendix A2 of *Consumer Price Index, Australia* (Cat. no. 6401.0) for more details.

(c) Minor change to composition and in some cases series renamed (linked to the 13th series equivalent). See Appendix A2 of *Consumer Price Index, Australia* (Cat. no. 6401.0) for more details.

(d) New series, part or combination of previously published series. See Appendix A2 of *Consumer Price Index, Australia* (Cat. no. 6401.0) for more details.

Source: *Consumer Price Index* (Cat. no. 6401.0).

18

ESTIMATED RESIDENT POPULATION AND COMPONENTS OF POPULATION CHANGE

Period	Net migration			Total increase	Population at end of period
	Natural increase	Interstate	Overseas(a)		
1996-97	6 951	-4 628	3 104	5 427	1 479 680
1997-98	6 602	-3 254	3 390	7 638	1 486 418
1998-99	6 593	-2 869	2 932	6 656	1 493 074
1997-98					
March	2 074	-519	1 291	2 774	1 485 206
June	1 471	-810	551	1 212	1 486 418
1998-99					
September	1 188	-422	778	1 544	1 487 661
December	1 775	-901	707	1 581	1 489 906
March	1 917	-682	1 149	2 384	1 491 391
June	1 713	-864	298	1 147	1 492 408
1999-00					
September	1 515	-600	784	1 699	1 494 107
December	1 540	-1 291	808	1 057	1 495 164
March	1 998	-1 735	662	925	1 496 089

(a) Includes category jumping.

Source: Australian Demographic Statistics (Cat. no. 3101.0).

19

BIRTHS, DEATHS, MARRIAGES AND DIVORCES

Period	Registrations			
	Births	Deaths	Marriages	Divorces
1996-97	18 576	11 625	8 003	4 362
1997-98	18 330	11 728	7 988	4 113
1998-99	18 277	11 684	8 033	4 201
1997-98				
March	4 599	2 525	2 405	1 016
June	4 479	3 008	1 824	1 005
1998-99				
September	4 722	3 443	1 294	1 053
December	4 524	2 804	2 499	1 085
March	4 594	2 494	2 472	919
June	4 559	2 907	1 769	1 134
1999-00				
September	4 722	3 207	1 259	1 058
December	4 139	2 599	2 737	1 190
March	4 759	2 761	2 436	965

Source: Australian Demographic Statistics (Cat. no. 3101.0).

Period	Employed full-time		Employed part-time		Total employed		Unemployed		Labour force	
	Males	Females	Males	Females	Males	Females	Males	Females	Males	Females
ANNUAL AVERAGE ('000)										
1997-98	317.5	145.9	48.8	136.4	366.3	282.3	42.1	28.8	408.4	311.0
1998-99	319.4	148.1	49.2	136.2	368.6	284.3	40.2	26.6	408.8	310.9
1999-00	321.9	152.4	55.9	141.4	377.8	293.9	35.3	25.0	413.0	318.9
MONTHLY, ORIGINAL ('000)										
1999-00										
September	317.6	150.9	56.6	144.0	374.2	294.9	34.1	26.4	408.3	321.3
October	313.7	153.7	59.4	138.8	373.1	292.5	37.4	25.0	410.5	317.5
November	317.5	153.7	55.0	146.7	372.5	300.4	34.4	21.5	406.8	321.9
December	326.8	160.3	59.7	145.3	386.6	305.6	35.0	24.2	421.6	329.8
January	317.4	147.6	56.7	144.4	374.1	292.1	36.8	24.9	410.9	317.0
February	328.4	154.9	52.6	136.7	381.0	291.5	38.1	30.4	419.2	322.0
March	327.6	152.5	55.8	141.7	383.4	294.2	33.0	26.8	416.3	321.0
April	325.6	149.9	56.9	143.9	382.5	293.9	35.2	25.4	417.7	319.3
May	323.3	148.0	55.8	142.8	379.1	290.9	38.3	24.9	417.4	315.8
June	328.9	154.6	52.1	137.6	380.9	292.2	33.5	22.3	414.5	314.6
2000-01										
July	332.2	155.9	52.2	140.8	384.4	296.7	31.3	22.3	415.7	319.0
August	327.7	158.2	54.5	138.4	382.2	296.6	31.9	22.9	414.1	319.5
September	329.1	162.1	53.2	139.8	382.4	301.9	33.8	22.4	416.2	324.3
October	327.7	157.4	54.4	142.0	382.1	299.3	31.7	19.7	413.8	319.1
November	326.9	157.1	51.8	141.5	378.7	298.6	32.5	21.4	411.3	320.0
MONTHLY, TREND ('000)										
1999-00										
September	315.8	152.6	57.7	140.2	373.5	292.8	34.9	25.3	408.4	318.1
October	315.8	152.8	58.3	142.1	374.1	294.9	35.1	24.9	409.2	319.8
November	316.9	152.9	58.5	143.5	375.4	296.4	35.0	24.6	410.4	321.0
December	319.2	152.6	58.1	144.6	377.3	297.2	34.8	24.6	412.1	321.8
January	322.1	152.1	57.1	144.7	379.2	296.8	34.7	24.9	413.9	321.7
February	325.0	151.5	55.7	144.1	380.7	295.6	35.0	25.1	415.7	320.7
March	327.2	151.3	54.5	142.7	381.7	294.0	35.4	25.3	417.1	319.3
April	328.7	151.7	53.5	141.3	382.2	293.0	35.8	25.3	418.0	318.3
May	329.3	153.1	53.1	140.1	382.4	293.2	35.9	24.9	418.3	318.1
June	329.3	155.0	53.2	139.5	382.5	294.5	35.4	24.2	417.9	318.7
2000-01										
July	329.0	156.8	53.5	139.3	382.5	296.1	34.5	23.5	417.0	319.6
August	328.6	158.2	53.7	139.1	382.3	297.3	33.6	22.9	415.9	320.2
September	328.3	159.0	53.8	139.0	382.1	298.0	32.7	22.5	414.8	320.5
October	327.7	159.3	53.9	139.1	381.6	298.4	32.0	22.2	413.6	320.6
November	327.2	159.2	53.9	139.2	381.1	298.4	31.6	22.0	412.7	320.4

(a) Population aged 15 and over.

Source: Labour Force, Australia, Preliminary (Cat. no. 6202.0).

21

CIVILIAN LABOUR FORCE, UNEMPLOYMENT AND PARTICIPATION RATES(a)

Period	Civilian population			Unemployment rate			Participation rate		
	Males aged 15 and over	Females aged 15 and over	Persons aged 15-19	Males aged 15 and over	Females aged 15 and over	Persons aged 15 and over	Males	Females	Persons
	'000	'000	%	%	%	%	%	%	%
ANNUAL AVERAGE									
1997-98	583.9	604.5	23.2	10.3	9.2	9.8	70.8	51.5	61.0
1998-99	583.2	609.8	21.7	9.8	8.6	9.3	70.1	51.0	60.3
1999-00	636.8	665.1	22.1	9.2	8.4	8.9	76.2	56.3	65.0
MONTHLY, ORIGINAL									
1999-00									
September	586.4	613.0	20.6	8.4	8.2	8.3	69.6	52.4	60.8
October	586.8	613.3	21.1	9.1	7.9	8.6	70.0	51.8	60.7
November	587.1	613.6	22.1	8.5	6.7	7.7	69.3	52.5	60.7
December	587.5	613.8	20.0	8.3	7.3	7.9	71.8	53.7	62.5
January	587.8	614.0	21.8	9.0	7.8	8.5	69.9	51.6	60.6
February	588.1	614.2	23.3	9.1	9.5	9.3	71.3	52.4	61.6
March	588.4	614.4	22.0	7.9	8.4	8.1	70.8	52.3	61.3
April	588.8	614.7	19.3	8.4	8.0	8.2	70.9	51.9	61.2
May	589.2	614.9	19.4	9.2	7.9	8.6	70.8	51.4	60.9
June	589.6	615.2	17.5	8.1	7.1	7.7	70.3	51.1	60.5
2000-01									
July	590.0	615.5	15.1	7.5	7.0	7.3	70.5	51.8	61.0
August	590.4	615.8	20.5	7.7	7.2	7.5	70.1	51.9	60.8
September	590.7	616.0	17.6	8.1	6.9	7.6	70.4	52.6	61.4
October	591.0	616.3	16.9	7.7	6.2	7.0	70.0	51.8	60.7
November	591.3	618.3	18.2	7.9	6.7	7.4	74.4	51.9	60.5
MONTHLY, TREND									
1999-00									
September	n.a.	n.a.	n.a.	8.5	8.0	8.3	69.7	51.9	60.6
October	n.a.	n.a.	n.a.	8.6	7.8	8.2	69.7	52.1	60.7
November	n.a.	n.a.	n.a.	8.5	7.7	8.1	69.9	52.3	60.9
December	n.a.	n.a.	n.a.	8.4	7.7	8.1	70.1	52.4	61.1
January	n.a.	n.a.	n.a.	8.4	7.7	8.1	70.4	52.4	61.2
February	n.a.	n.a.	n.a.	8.4	7.8	8.2	70.7	52.2	61.2
March	n.a.	n.a.	n.a.	8.5	7.9	8.2	70.9	52.0	61.2
April	n.a.	n.a.	n.a.	8.6	7.9	8.3	71.0	51.8	61.2
May	n.a.	n.a.	n.a.	8.6	7.8	8.2	71.0	51.7	61.2
June	n.a.	n.a.	n.a.	8.5	7.6	8.1	70.9	51.8	61.1
2000-01									
July	n.a.	n.a.	n.a.	8.3	7.3	7.9	70.7	51.9	61.1
August	n.a.	n.a.	n.a.	8.1	7.2	7.7	70.4	52.0	61.0
September	n.a.	n.a.	n.a.	7.9	7.0	7.5	70.2	52.0	60.9
October	n.a.	n.a.	n.a.	7.7	6.9	7.4	70.0	52.0	60.8
November	n.a.	n.a.	n.a.	7.7	6.9	7.3	69.8	52.0	60.7

(a) Population aged 15 and over.

Source: Labour Force, Australia, Preliminary (Cat. no. 6202.0).

AVERAGE WEEKLY EARNINGS OF EMPLOYEES

Period	Males			Females			Persons		
	Full-time adult ordinary time earnings	Full-time adult total earnings	All males total earnings	Full-time adult ordinary time earnings	Full-time adult total earnings	All females total earnings	Full-time adult ordinary time earnings	Full-time adult total earnings	All employees total earnings
ANNUAL AVERAGE (\$ per week)									
1997-98	705.60	755.05	646.28	606.05	619.33	438.50	670.53	707.20	545.70
1998-99	741.20	797.55	678.28	627.93	647.28	464.35	699.13	741.70	575.23
1999-00	756.75	812.53	695.00	641.65	663.28	457.23	714.38	757.50	575.90
QUARTERLY, ORIGINAL (\$ per week)									
1998-99									
May	742.20	796.80	686.30	624.70	648.00	457.30	699.70	742.90	576.10
1999-00									
August	742.70	792.00	669.30	631.20	655.70	451.20	702.00	742.20	560.40
November	745.30	805.60	697.40	638.70	663.40	453.80	705.70	752.70	572.80
February	768.60	821.20	708.30	645.30	656.80	461.30	723.00	760.30	584.50
May	770.40	831.30	705.00	651.40	677.20	462.60	726.80	774.80	585.90
2000-01									
August	791.60	846.00	724.80	667.70	692.60	484.00	745.50	788.90	603.60
QUARTERLY, TREND (\$ per week)									
1998-99									
May	740.70	796.50	677.30	629.00	653.20	458.10	699.90	743.80	570.10
1999-00									
August	742.70	796.50	694.00	632.00	655.70	453.80	702.10	744.80	569.00
November	750.50	804.50	693.10	636.80	657.40	453.50	708.50	750.50	572.60
February	762.30	818.00	702.30	644.30	663.60	458.90	718.80	761.20	580.10
May	775.30	833.60	711.10	654.40	676.10	468.00	743.50	790.90	599.70
2000-01									
August	787.30	848.10	719.00	667.00	693.40	479.30	743.50	790.90	599.70

Source: Average Weekly Earnings, States and Australia (Cat. no. 6302.0).

23

SECURED HOUSING FINANCE COMMITMENTS(a)

Period	Original		Seasonally adjusted		Trend	
	Dwelling units	Value	Dwelling units	Value	Dwelling units	Value
	no.	\$m	no.	\$m	no.	\$m
1999-00						
August	3 419	331	3 587	348	3 617	352
September	3 545	349	3 649	361	3 736	365
October	3 708	370	3 977	394	3 832	375
November	4 310	422	3 959	380	3 878	380
December	3 924	390	3 764	366	3 878	380
January	3 154	313	3 840	381	3 825	377
February	3 976	398	3 836	382	3 727	369
March	4 236	417	3 671	362	3 621	362
April	3 099	309	3 367	340	3 559	357
May	4 003	401	3 707	365	3 566	356
June	3 510	354	3 239	340	3 628	358
2000-01						
July	3 537	332	3 747	355	3 721	362
August	4 079	383	4 176	396	3 815	366
September	3 704	347	3 968	373	3 891	368
October	3 629	345	3 722	348	3 950	369

(a) Excludes alterations and additions. Includes refinancing.

Source: *Housing Finance for Owner Occupation, Australia (Cat. no. 5609.0)*.

24

FINANCE COMMITMENTS

Period	Commercial finance commitments			Personal finance commitments			
	Fixed loan facilities	Revolving credit facilities	Total commercial finance commitments	Fixed loan facilities	Revolving credit facilities	Total personal finance commitments	Total lease finance commitments
	\$m	\$m	\$m	\$m	\$m	\$m	\$m
1999-00							
August	412.9	255.3	668.3	124.3	127.6	251.9	26.6
September	265.9	206.5	472.4	126.6	140.0	266.6	19.8
October	325.5	209.8	535.3	125.0	128.0	253.0	14.7
November	289.4	221.8	511.2	128.9	151.3	280.2	12.7
December	380.7	296.0	676.8	124.7	143.8	268.5	13.4
January	272.3	134.8	407.1	122.6	94.8	217.4	10.2
February	301.4	201.0	502.4	138.4	120.8	259.2	18.0
March	403.7	240.8	644.5	155.3	159.3	314.7	12.3
April	370.5	176.4	546.9	108.2	135.6	243.7	17.7
May	309.5	249.9	559.4	139.5	156.1	295.6	16.7
June	758.9	392.6	1 151.4	154.0	147.9	301.9	18.4
2000-01							
July	337.0	256.5	593.5	112.8	147.0	259.8	9.8
August	248.0	163.0	411.0	141.9	155.3	297.2	10.1
September	234.0	269.6	503.6	131.6	99.7	231.3	15.8

Source: *Unpublished data, PC Ausstats*.

PUBLICATIONS SOURCE INDEX

- (1) *Australian National Accounts, Quarterly State Details*
(Cat. no. 5206.0.40.001)
- (2) *International Merchandise Trade, Australia*
(Cat. no. 5422.0) Quarterly
- (3) *Retail Trade, Australia* (Cat. no. 8501.0) Monthly
- (4) *New Motor Vehicles Registrations, Australia, Preliminary*
(Cat. no. 9301.0) Monthly
- (5) *State Estimates of Private New Capital Expenditure*
(Cat. no. 5646.0) Quarterly
- (6) *Tourist Accommodation, Australia* (Cat. no. 8635.0) Quarterly
- (7) *Building Approvals, Australia* (Cat. no. 8731.0) Monthly
- (8) *Building Activity, Australia* (Cat. no. 8752.0) Quarterly
- (8a) *Building Activity, Australia, Dwelling Unit Commencements, Preliminary* (Cat. no. 8750.0) Quarterly
- (9) *Engineering Construction Activity, Australia*
(Cat. no. 8762.0) Quarterly
- (10) *Manufacturing Production, Australia, Preliminary*
(Cat. no. 8301.0) Quarterly
- (11) *Livestock Products, Australia* (Cat. no. 7215.0) Quarterly
- (12) *Actual and Expected Private Mineral Exploration, Australia*
(Cat. no. 8412.0) Quarterly
- (13) *Consumer Price Index* (Cat. no. 6401.0) Quarterly
- (14) *Price Index of Materials Used in House Building, Six State Capital Cities and Canberra* (Cat. no. 6408.0) Quarterly
- (15) *Price Index of Materials Used in Building Other Than House Building, Six State Capital Cities and Canberra*
(Cat. no. 6407.0) Quarterly
- (16) *House Price Indexes: Eight Capital Cities*
(Cat. no. 6416.0) Quarterly
- (17) *Australian Demographic Statistics* (Cat. no. 3101.0) Quarterly
- (18) *Labour Force, Australia, Preliminary* (Cat. no. 6202.0) Monthly
- (19) *Job Vacancies, Australia* (Cat. no. 6354.0) Quarterly
- (20) *Industrial Disputes, Australia* (Cat. no. 6321.0) Monthly
- (21) Unpublished overseas arrival and departure statistics
- (22) *Average Weekly Earnings, States and Australia*
(Cat. no. 6302.0) Quarterly
- (23) *Wage Cost Index, Australia* (Cat. no. 6345.0) Quarterly
- (24) *Housing Finance for Owner Occupation, Australia*
(Cat. no. 5609.0) Monthly
- (25) Unpublished statistics available from PC AUSSTATS
- (26) *Reserve Bank of Australia Bulletin*